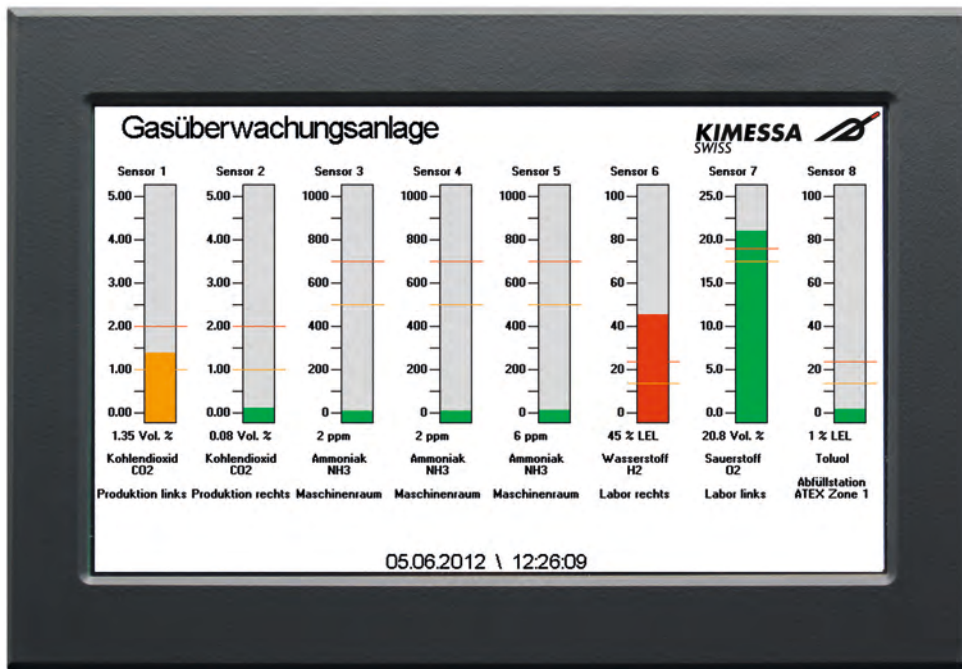




## CANline Touch-Display



### Features

- The CANline Touch-display serves as a graphic display measuring physical interface
- The presentation of the operating conditions are displayed using coloured bar graphs (green=Normal mode, orange=Pre-alarm, red=Main-alarm, grey=Inactive sensor, yellow and "Error" = Technical Error)
- Lock Alarm Display: Display will lock in 'Gas-Alarm' to view the peak gas reading (touch the screen RESET- Button to revert to normal viewing)
- Upload an area floor plan to display sensor location and status (changing colour from e.g. green to red)
- Measured gas values are automatically logged and can be easily recalled by touching the sensor chart block
- Automatic logging of gas alarm events: Pre-alarm, Main-alarm and faults
- The standard assembly is designed for mounting on the door of a control cabinet while a wall mounted version is also available
- The CANline gas monitor RS232 serial port connects to the Touch display via a serial cable (serial cable included). With the optional serial BUS-Converter one or several Touch displays can be mounted anywhere on the CAN network
- Automatic setup after programming the CANline gas monitor
- Input of sensor description and alphanumeric data by touch screen function (7 rows per detector)
- Option to selectively monitor one or groups of sensors
- Competitive price
- Swiss quality product

## CANline Touch-Display

- LCD Type: TFT LDC, WVGA 800 x 480
- Boot-Time: 4 s
- Memory: Compact Flash™ (CFC) / RAM

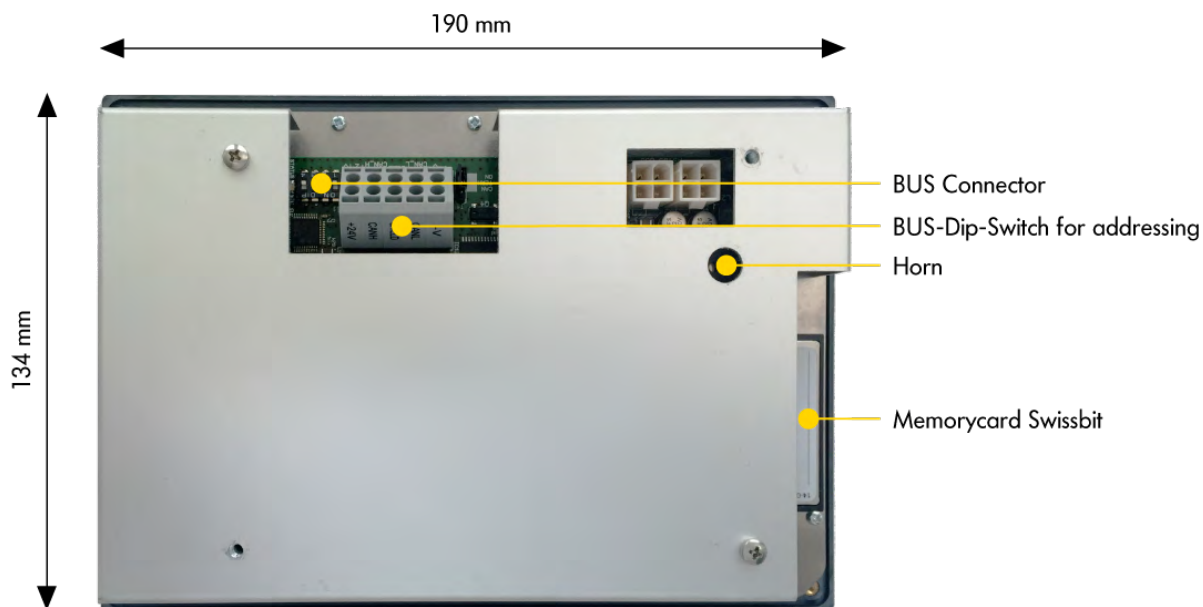
### Main features:

Operating temperature:	-20 °C ... +70 °C
Air humidity:	5...95 % (non condensing)

### Housing

Housing protection:	IP 20
Material:	Thermoplast
Weight:	950 g
Dimension length:	134 mm
Dimension width:	190 mm
Dimension height:	29 mm

### Electronic and Dimensions



### Specifications electronic

Operating voltage:	12 ... 30 VDC
Power consumption:	300 mA
Sensor-Inputs:	none
Switching output:	none
Connection:	KIMESSA CANline-Bussystem 4 x 1.00 mm <sup>2</sup> , shielded

### Specifications construction

Tests:	none
--------	------