



**Model 8700**



**Model 8701**

# Oxygen Transmission Rate Analyzers

## Models 8700 & 8701

The ultimate solution for fast and reliable oxygen transmission rate analysis of multiple bottles or packages.

### Model 8700

Ideal for rapid oxygen transmission rate testing of multiple:

- PET bottles
- Coated PET bottles
- Coated bottles for beer and wine
- Soft drink bottles
- Bottle closures

### Model 8701

Ideal for flexible testing of different packaging types:

- Pet food pouches
- Cereal packages
- Pharmaceutical packaging
- Trays
- Complete packaging
- PET bottles
- Fruit juice containers

## Ultra fast analysis for QC

Avoid production scrap and expensive rework costs the 8700 and 8701 Turbopurge works in conjunction with the proprietary coulometric sensor.

Complete test results for barrier coated PET bottles are available in less than 12 hours. Specification tests for QC can be obtained in less than 3 hours.

## Multiple test stations

Multi-station plastic bottle molding units require multichamber OTR analysis. Each 8700 or 8701 is equipped with 11 test chambers as standard.

For even greater capacity you can add 5 expansion units (66 test chambers total) controlled by a single work station. Using the 8701 each test chamber can be individually enabled/disabled/stopped/started/delayed.

## Wide measuring range

One analyzer has the ability to evaluate a wide range of barrier alternatives and their corresponding performance.



Test 11 chambers at once

## Automatic control

Utilizes software to automatically manipulate mass flow controllers and all important test parameters while archiving valuable data, settings, and results graphically and digitally.

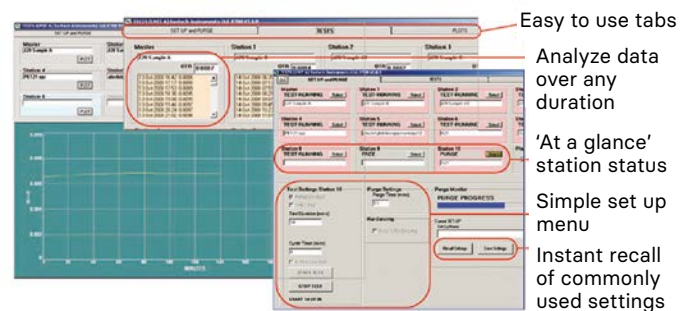
## R & D and QC

Whatever your application may be, the 8700 and 8701 have the speed and flexibility to be used as an invaluable QA tool, saving time and money.

These instruments are equally at home within a Research and Development environment, enabling cutting edge barrier technologies to be tested for OTR.

## Easy to use

The control software is simple and intuitive. Training requirements are minimal, and QA staff can carry out OTR tests in a matter of minutes. In real time, the Windows® based software will provide you with a complete graphical representation of the measurement so that you can monitor the process and document the results.



## 8700 Oxygen Permeation Analyzer:

The 8700, with fixed platens, is used primarily in PET bottle manufacturing, as an invaluable R&D resource for new packaging development to test and validate new packages.

In addition, this analyzer can be used for QC, to confirm the performance standard of the packaging.

## 8701 Oxygen Permeation Analyzer:

The 8701 offers a range of optional adapters to provide versatile package testing. Adapters are available for containers, canisters, pouches, bags, closures and more.

Adapters can also be specially designed for your specific application.



### Delay Repeat Test Adapter

Test any package that will take days to equilibrate.

Connect and start test. Withdraw to shelf and reconnect later to verify equilibrium.



### Complete Package Adapter

Glue to complete package for easy and quick testing.



### Bottle Adapter

No need to glue bottle to the adapter any more. Just screw in for fast testing.

## Features & Benefits:

- Measurement of 11 samples simultaneously
  - individually started, stopped or delayed
- Expandable up to 5 Modules (Total 66 test cells) controlled from a single work station
- Easy sample connection and rapid measurements make the 8700/8701 the most efficient permeation analyzers available
- Ultra fast testing – Systech Illinois' Turbopurge™ technology allows you to start and advance your tests to the critical data collection mode much faster. Saving out-of-specification production time. Testing can be done in as little as 3 hours
- Set up to eliminate errors and reduce operator training
- Confidence in your permeation measurement
  - the proven Coulometric sensor provides you with reliable, repeatable, and accurate measurements time and time again
- Simple Windows® based software control
  - easy to set up with Quick Start stored testing configuration settings and clear concise results presentation
- Low operation costs – no special gases, industrial grade nitrogen is all you need

## Conforms to:

ASTM D3958, F1307, F2622, ISO 15105-2,  
DIN 53380, JIS K7126

Electromagnetic Compatibility Directive 89/336/  
EEC Low Voltage Directive 73/23/EEC

## Technical Specification:

### OTR Test Range

Package	cc/(pkg)
cc/(pkg • day)	0.00025 to 2000

Resolution cc/(pkg . day)	0.00001
---------------------------	---------

Repeatability cc/(pkg . day)	0.00001 or 2%
------------------------------	---------------

Test Temperature Range	Ambient
------------------------	---------

Automatic Temperature Control	Ambient
-------------------------------	---------

Foot Print	760 x 590 x 350 (mm) 30 x 23.5 x 13.75 (inches)
------------	--

Controlled RH Testing	Dry and Unknown Wet RH (assumed saturated or 100% RH) Dry Only
-----------------------	---

Expansion	Up to 5 modules (Total 66 test cells)
-----------	--

Test Sample Size	Films 50cm <sup>2</sup> – Packages
------------------	------------------------------------

Calibration	Films or NIST Gas
-------------	-------------------

Power Rating	100-240VAC, 50/60Hz, 150VA (max)
--------------	-------------------------------------

## Contact Details

**web.** [www.industrialphysics.com](http://www.industrialphysics.com)

**email.** [info@industrialphysics.com](mailto:info@industrialphysics.com)

**email.** [info.china@industrialphysics.com](mailto:info.china@industrialphysics.com)